

Australian Education International (AEI)

A User Guide to International Student Data

For further details contact AEI through:

The Enquiry Hotline: 1300 363 079

Email: aei@dest.gov.au

2008

Contents

Introduction	3
Prerequisites	3
Guide objectives	3
The AEI website	4
Navigating your way to the AEI data	4
Statistics	5
International Student Data	5
Pivot Tables	6
Monthly Time series of Student Enrolments – summaries by sector	6
Using the Pivot Table: AEI International Student Data	8
The Excel Pivot Table	8
Structure of a Pivot Table	9
A survival guide	10
Pivot Table menu	13
Copying the PivotTable output to an Excel spreadsheet	14
Other useful data and research	
Research and Market Data Snapshots	15
Other research	15
Appendix 1	
Data categories available from the detailed AEI Pivot Table	16
Details of data variables available from the detailed AEI Pivot Table	17

Introduction

The purpose of this guide is to assist people within the Australia international education industry to understand the scope of the publicly available International Student Data released by Australian Education International (AEI). The guide will also provide information on how to manipulate the data using the Pivot Table supplied on the AEI website.

The data provide an up to date time series from 2002 onwards of onshore enrolments by international students studying in Australia on a student visa. The data are able to be manipulated at either a Basic Level (available to all, without charge) or at a Standard and Detailed Level (available only to AEI Market Information Package (MIP) subscribers only). This Guide uses references to the publicly available Basic Level data. New data, by enrolments and commencements, are generally available within 6 weeks of the end of a reporting month.

This guide was developed by the International Research and Analysis Unit (IRAU) within AEI.

Prerequisites

To manipulate the AEI Pivot Table effectively, a working knowledge of Microsoft Office Excel 2003 is assumed. The Pivot Table will work on earlier versions of Excel, but not all options will be available.

While the Pivot Table is supported by Apple Macintosh some of the functionality will be different.

Note as AEI will continue to improve the operability of the Pivot Table as opportunities are identified, some detail, both in content and examples used, may change.

Guide objectives

Once you have completed this guide you should:

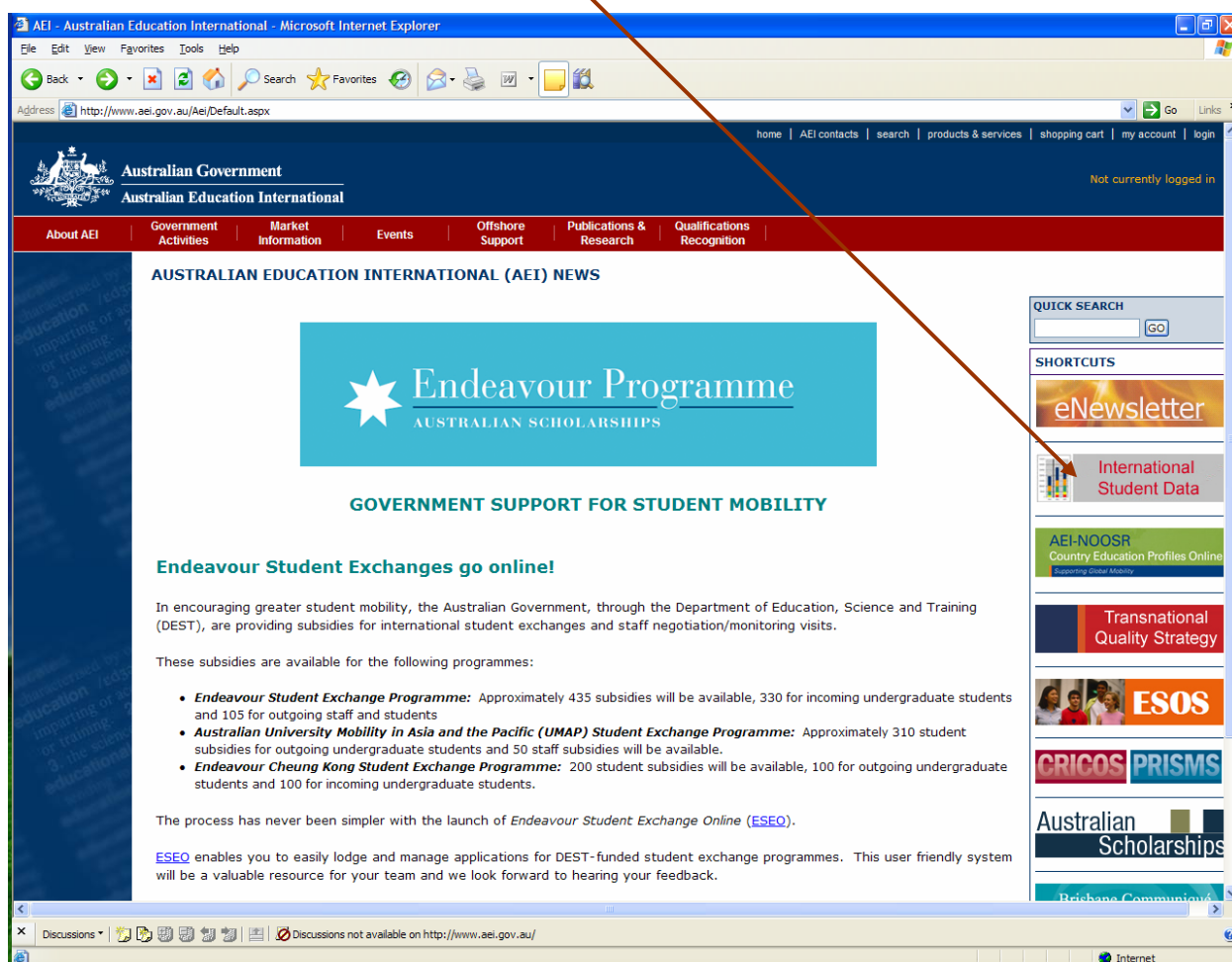
- Be able to find the data on the AEI website;
- Understand the source of the data;
- Understand how the data are derived;
- Feel confident to extract data from the AEI Pivot Table provided on the website; and
- Be aware of the various AEI statistical products.

The AEI website

Before you start to use the AEI data, it would be helpful to familiarise yourself with the range of statistical information available on AEI Online – the AEI website (www.aei.dest.gov.au). This website is AEI's vehicle for disseminating market intelligence, which includes the range of AEI statistical material. You may already use this site regularly, and if so, you may wish to skip this section of the guide. However, the part of the website that hosts the statistics, also hosts other information about the data.

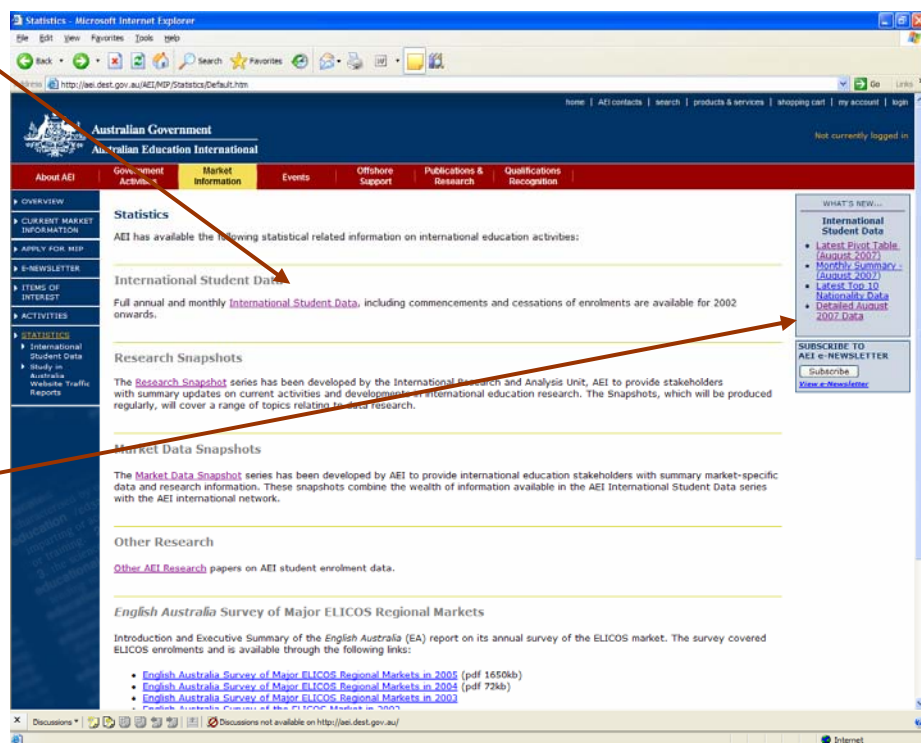
Navigating your way to the AEI data

The screenshot below is the AEI online home page (as at September 2007). While there are a number of ways to access AEI International Student Enrolment Data from the website, the simplest is to click on the 'International Student Data' shortcut button:



From the AEI statistics main page, the user can access a range of AEI statistical material:

- the International Student Data;
- the Research Snapshots;
- the Market Data Snapshots; and
- other useful research material.



Go direct to the “What’s New” link for fast connection to the most recent Pivot Table.

International Student Data

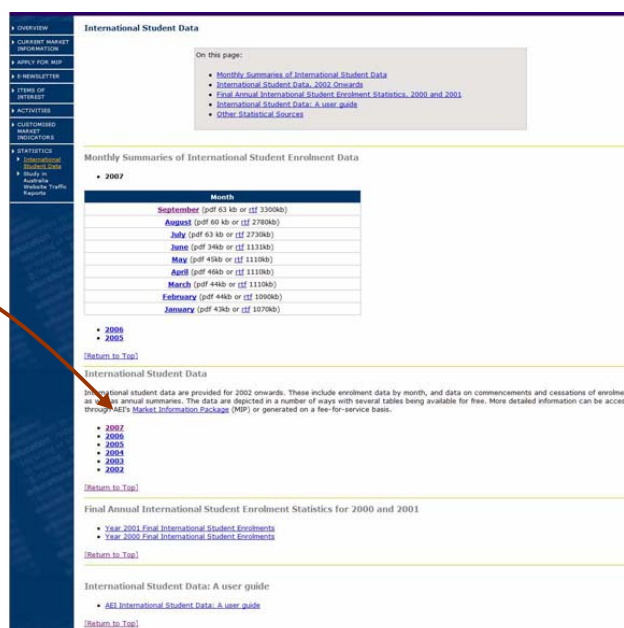
From the International Student Data page link, the user can access a range of material.

This includes:

- The *Monthly Summaries of International Student Data* issued with the enrolment data.
- *International Student Data* provides detailed data (from 2002 onwards) by a range of variables including Nationality, State, Sector and Month.

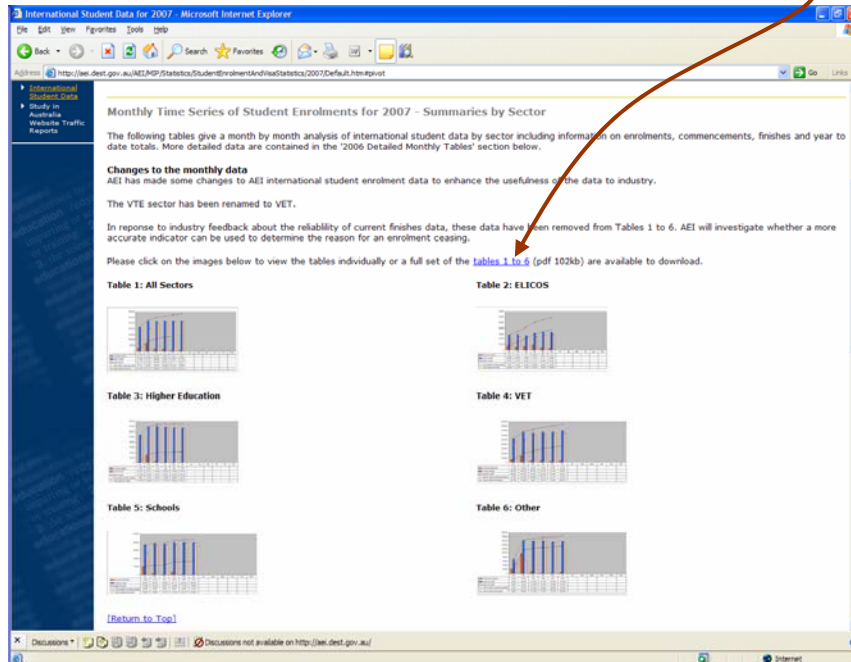
Other material is accessible through the hyperlinks. The Explanatory Notes include information on the source of the data; Enrolments; Commencements; Nationality; Sector; Provider type; level and field of study; and counting methodology.

The enrolment data are accessed on the *International Student Data* page by **clicking on the year of interest**. With other material the data are displayed in a number of options, as Pivot Tables, some Basic and others, Detailed.



Monthly Time Series of Student Enrolments - Summaries by Sector

These tables give a month by month analysis of international student data by sector. It includes information on enrolments and commencements for each month of the current year by each education sector. These are tables 1 to 6, available for free.



Pivot Tables

The Basic Pivot Table is available for free. It contains a limited number of variables, but provides sufficient information to understand the major trends in Australia's international education enrolments and commencements since 2002.

2007 Pivot Tables

Note: Items marked with (*) are available only to organisations who have access to AEI's [Market Information Package](#) (MIP) arrangements are outlined in [Accessing AEI Monthly Statistics](#).

Changes to the monthly data
AEI has made some changes to AEI international student enrolment data to enhance the usefulness of the data to industry.

The VTE sector has now been renamed to VET.

In response to industry feedback about the reliability of current finishes data, these data have been removed from the detailed monthly tables. A more accurate indicator can be used to determine the reason for an enrolment ceasing.

The initial display of the pivot table has been re-designed to improve manipulation of the table.

Basic Pivot Table 2007 (zip 5410kb)	Includes the variables Sector, Nationality, Month and Year for year to date commencements. AEI advises that the pivot table is compatible with Excel 2003 or later.
Detailed Pivot Table 2007 (zip 8840kb)(*)	Includes those available in the Basic Pivot Table and also includes State Study, Level of Study, Region and Provider Type. Warning - Unzipped file is approximately 56024kb. AEI advises that the file is compatible with Excel 2003 or later.

Also available is the [User guide to international student data](#) which provides an overview of the scope of the publicly available data released by Australian Education International (AEI). The guide also provides information on how to manipulate the data using Microsoft Excel.

[\[Return to Top\]](#)

2007 Detailed Monthly Tables

The detailed monthly tables expand on the information provided in tables one to six. These tables include information on month to month data. Monthly data adds new enrolments for the month to the number at the start of month.

Tables 7 to 12 contain information about each Sector by top 10 Nationalities and State and Territory. The focus of these tables is enrolment and commencement activity during the reference month to counting the year-to-date activity up to and including the reference month.

The data in the following tables is updated throughout the year resulting in some revision to previously published data.

Note: Items marked with (*) are available only to organisations who have access to AEI's [Market Information Package](#) (MIP) arrangements are outlined in [Accessing AEI Monthly Statistics](#).

The Detailed Pivot Table contains additional variables, and access is restricted to those who subscribe to the Market Information Package (MIP).

A series of monthly tables, (Tables 7 to 12 in pdf format) are available for free.

Tables 13 to 26 in pdf format are available to MIP subscribers only.

resource. A [sample data set](#) (zip 5300kb) is available for use with this guide. For users with Microsoft Excel 2000 or earlier, please refer to the guide for further information and advice, or [contact AEI](#).

[\[Return to Top\]](#)

2007 Detailed Monthly Tables

The detailed monthly tables expand on the information provided in tables one to six. These tables include information on monthly enrolments, commencements and year to date data. Monthly data adds new enrolments for the month to the number at the start of month.

Tables 7 to 12 contain information about each Sector by top 10 Nationalities and State and Territory. The focus of these tables has changed from counting the enrolment and commencement activity during the reference month to counting the year-to-date activity up to and including the reference month.

The data in the following tables is updated throughout the year resulting in some revision to previously published data.

Note: Items marked with (*) are available only to organisations who have access to AEI's [Market Information Package](#) (MIP). For non-MIP clients access arrangements are outlined in [Accessing AEI Monthly Statistics](#).

Tables 7 to 12 (PDF)	Tables 13 to 26 (PDF) (*)	Tables 7 to 26 (Excel) (*)
January (pdf 179kb)	January (pdf 569kb)	January (xls 2590kb)
February (pdf 179kb)	February (pdf 617kb)	February (xls 2670kb)
March (pdf 179kb)	March (pdf 627kb)	March (xls 2710kb)
April (pdf 179kb)	April (pdf 633kb)	April (xls 2710kb)
May (pdf 179kb)	May (pdf 639kb)	May (xls 2710kb)
June (pdf 178kb)	June (pdf 642kb)	June (xls 260kb)
July (pdf 178kb)	July (pdf 620kb)	July (xls 2740kb)
August (pdf 179kb)	August (pdf 653kb)	August (xls 2750kb)
September (pdf 179kb)	September (pdf 663kb)	September (xls 27503kb)

[\[Return to Top\]](#)

International Student Data: A user guide

[International Student Data: A user guide](#)

[\[Return to Top\]](#)

[Home](#) | [Links](#) | [Site Map](#) | [Feedback](#) | [Privacy](#) | [Disclaimer](#) | [Copyright © Australian Government](#)

Tables 13 to 26 in Excel format are also available to MIP subscribers only.

Using the Pivot Table: AEI International Student Data

The Excel Pivot Table

The Pivot Table is a data analysis tool that allows the user to create customised multidimensional views of the data by dragging and dropping variables into and out of a table.

This section has used material available in:

<http://office.microsoft.com/en-us/excel/HA010346321033.aspx?pid=CH010714011033> as at May 2008. The site provides self-paced tutorials for interested users.

AEI Pivot Tables available on the website

AEI have available three pivot tables of international student data. They are:

- (i) Basic Pivot Table;
- (ii) Standard Pivot Table
- (iii) Detailed Pivot Table.

The “Basic” table is available for free and the latter two are by MIP subscription only.

Basic Pivot Table

Available from this table are enrolment and commencement data by Year (from 2002) by Month, by Sector and by State.

Standard Pivot Table

Items available include those from the *Basic* version with the additional of: ‘Region’, ‘Level of Study’, ‘Broad Field of Education¹’ and ‘Provider Type’.

Detailed Pivot Table

Items available include those from the *Standard* version with the additional of: ‘Narrow Field of Education¹’ and ‘Detailed Field of Education¹’.

A full list of all data categories and variables available in the AEI pivot tables are at **Attachment 1**.

¹ ‘Field of Education’ is available in AEI data at the Broad, Narrow and Detailed level. The item is based on the ‘Australian Standard Classification of Education (ASCED), 2001’ (*ABS Catalogue No. 1272.0*). The “Broad” level refers to the two-digit level of the classification; the “Narrow” level refers to the four-digit level of the classification; and the “Detailed” level refers to the six-digit and finest level available from the classification. For full details, refer to the classification available for free from the ABS website at www.abs.gov.au.

Structure of a Pivot Table

If you are not familiar with the specific terms used to identify the parts of a Pivot Table report, you may find it useful to read this section for a quick overview.

- Page area: The placement of a variable in this area will enable you to filter the displayed table by individual categories of that variable. For example, if you used State as a page field, you can select an individual State (eg. NSW), thereby displaying summarised data for that state or territory in the Pivot Table report.
- Data area: The area where you assign the 'population' to be displayed in the table. It is critical to remember that only items that start with 'DATA' are placed in the Data area. For example, YTD Enrolments is a data field.
- Row area: The categories of a variable placed in the row area will appear as rows in the Pivot Table report.
- Column area: The categories of a variable placed in the column area will appear as columns in the Pivot Table report. It is best to restrict the use of the column area only to variables with a smaller number of categories, eg. year, state, provider type.

While any variable can be placed in any area, due to the number of categories within some variables, some thought needs to be given to the placement of an item. For example, given there are just over 200 nationalities, it is best to display Nationality in the row area if you want to show all nationalities. However, if you want to show an individual nationality, you can place Nationality in the page area and restrict your report by selecting the nationality in question using the drop-down selector.

By manipulating the data, the user can create a customised report.

At first glance the level of detail in a Pivot Table can appear overwhelming. However, users can choose to drill down into a single aspect of the data, or pull back for an overview of an entire sector. Users can also customise their view of the data by:

- Adding or removing data variables;
- Rearranging the layout; and
- Using page fields to view a subset of the data.

A survival guide

When opened, the *AEI Basic Pivot Table* looks like this (colour coded in this example only):

Page area (coloured orange)

Nationality	Sum of DATA YTD Enrolments								Sum of DATA YTD Commencements							
	2002	2003	2004	2005	2006	2007	2008	2002	2003	2004	2005	2006	2007	2008		
China	23,258	32,602	41,237	53,382	60,533	66,325	75,841	6,907	7,524	9,886	15,510	16,533	18,318	21,718		
India	7,177	7,891	10,890	17,307	22,368	33,566	50,366	1,227	1,798	2,269	3,305	4,536	9,350	12,741		
Korea, Republic of (South)	12,200	12,742	14,306	15,651	18,286	21,188	21,633	3,386	3,851	4,284	5,250	6,067	7,104	6,927		
Malaysia	11,752	14,697	15,574	16,365	15,854	16,150	16,096	3,411	4,222	3,923	4,757	4,508	4,892	4,476		
Hong Kong	13,256	15,880	15,998	16,124	15,176	14,453	13,403	3,555	3,828	3,233	3,943	3,777	3,641	3,304		
Thailand	7,963	9,452	9,553	9,719	10,061	10,872	11,658	2,338	2,542	2,388	2,582	2,667	2,837	2,992		
Japan	8,837	10,243	10,931	11,308	10,776	9,706	8,199	2,872	3,251	3,454	3,680	3,466	3,035	2,378		
Indonesia	13,826	13,825	12,667	12,104	11,028	10,404	10,085	2,640	2,597	2,210	2,700	2,606	2,482	2,360		
Brazil	1,745	1,767	1,935	2,645	4,149	5,287	6,433	697	620	704	1,091	1,670	1,938	2,311		
United States of America	4,842	5,623	6,923	7,857	7,473	7,427	6,291	3,282	3,693	4,903	5,762	5,407	5,353	4,269		
Taiwan	5,437	6,114	5,995	6,025	6,039	5,976	5,468	1,343	1,479	1,356	1,556	1,669	1,653	1,395		
Viet Nam	2,633	2,620	2,807	3,585	4,195	5,538	8,285	567	477	664	1,062	1,235	1,793	2,862		
Nepal	1,072	949	743	690	1,093	2,987	8,730	136	125	88	120	303	1,093	2,516		
Singapore	8,372	8,951	8,373	8,385	7,763	7,145	6,629	1,918	1,756	1,632	2,243	2,029	1,779	1,406		
Bangladesh	1,939	2,564	3,424	4,648	4,623	4,780	4,857	279	505	525	736	689	788	791		
Sri Lanka	2,159	2,167	2,240	2,630	3,289	4,439	5,413	284	380	415	766	1,090	1,471	1,685		
Germany	1,378	1,652	2,301	2,817	2,867	3,189	3,075	701	750	1,119	1,428	1,432	1,688	1,529		
Colombia	1,352	1,293	1,053	962	1,335	2,292	3,429	412	354	266	278	510	988	1,251		
Pakistan	1,083	1,054	1,171	1,441	1,864	2,624	3,614	153	198	230	365	540	684	869		
United Kingdom	1,829	2,249	2,506	2,868	3,058	3,302	3,378	628	651	704	968	1,036	1,118	1,058		
Canada	1,541	1,997	2,521	3,073	3,375	3,603	3,557	831	975	1,292	1,543	1,832	1,814	1,665		
Saudi Arabia	49	84	240	466	996	1,595	3,248	15	30	85	189	429	649	1,201		
France	1,074	1,231	1,284	1,398	1,648	2,055	2,228	422	425	525	617	766	916	946		
Czech Republic	1,109	1,448	1,323	1,228	1,263	1,257	1,228	318	440	377	414	475	473	385		
Mauritius	749	985	1,118	1,242	1,328	1,658	2,237	164	206	212	309	378	430	661		
Norway	3,409	3,505	3,034	2,697	2,006	1,633	1,276	881	737	536	709	550	484	391		
Poland	695	1,057	1,128	1,130	1,111	1,186	1,174	204	277	249	279	264	260	316		
Zimbabwe	548	820	937	1,131	1,319	1,474	1,604	230	184	211	283	339	387	403		
Philippines	673	632	609	745	991	1,281	1,634	117	114	153	232	306	365	491		
Sweden	1,732	1,770	1,598	1,627	1,594	1,379	1,225	658	610	564	650	616	530	440		
Egypt	108	99	108	135	330	641	1,119	33	16	24	30	107	193	310		
Kenya	948	1,153	1,154	1,135	1,180	1,277	1,459	263	251	190	266	278	348	408		
Slovakia	089	1,296	1,207	1,052	877	859	823	295	287	258	243	188	235	242		
Iran, Islamic Republic of	100	288	500	613	743	1,007	1,159	37	74	112	109	217	305	290		
Turkey	436	444	414	481	602	775	987	115	92	91	120	170	244	296		
Switzerland	792	792	759	740	855	779	810	383	385	353	327	391	365	325		
Mexico	264	396	562	698	666	785	841	110	155	203	301	292	373	349		
United Arab Emirates	121	249	307	510	650	814	926	48	93	78	185	221	230	228		
Italy	364	443	473	427	525	635	718	141	161	173	150	237	259	249		
Peru	81	84	84	143	304	486	796	24	19	24	53	145	180	254		

Column area (coloured blue)

Row area (coloured green)

Data area (coloured yellow)

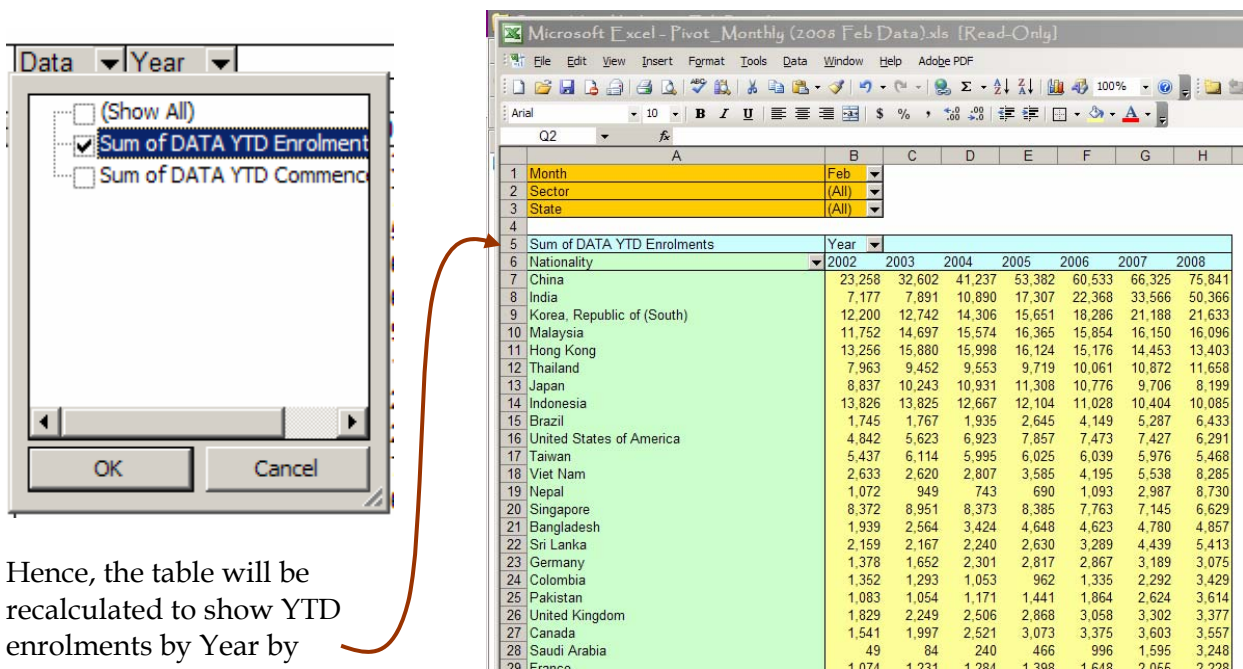
The *Basic Pivot Table* International Student Data (YTD February 2008 pivot table is used in this example) offers two types of AEI Data:

- Sum of data of year to date (YTD) enrolments; and
- Sum of data of YTD commencements.

The *Basic Pivot Table* can be manipulated to display enrolment and commencement data on a year to date basis by Month, by Sector and by State. Remember that once you start making changes, it is not always easy to reverse them. An easier option may be to close your pivot table without saving and reopen the pivot table you have downloaded from the AEI website and start again.

Selecting data type

For your interrogation of the data, you may decide to show only enrolments - click the down arrow next to variable "Data", de-select 'Sum of DATA YTD Commencements', then click 'OK'.

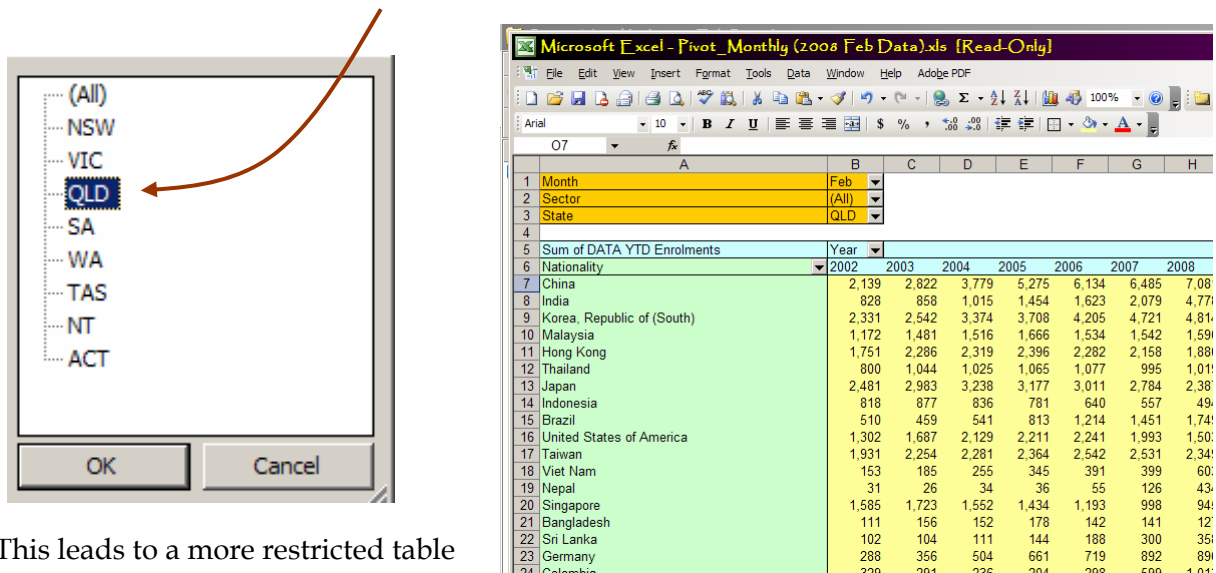


Hence, the table will be recalculated to show YTD enrolments by Year by Nationality.

Sum of DATA YTD Enrolments	Year	2002	2003	2004	2005	2006	2007	2008
Nationality	2002	23,258	32,602	41,237	53,382	60,533	66,325	75,841
China		7,177	7,891	10,890	17,307	22,368	33,566	50,366
India		12,200	12,742	14,306	15,651	18,286	21,188	21,633
Korea, Republic of (South)		11,752	14,697	15,574	16,365	15,854	16,150	16,096
Malaysia		13,256	15,880	15,998	16,124	15,176	14,453	13,403
Hong Kong		7,963	9,452	9,553	9,719	10,061	10,872	11,658
Thailand		8,837	10,243	10,931	11,308	10,776	9,706	8,199
Japan		13,826	13,825	12,667	12,104	11,028	10,404	10,085
Indonesia		1,745	1,767	1,935	2,645	4,149	5,287	6,433
Brazil		4,842	5,623	6,923	7,857	7,473	7,427	6,291
United States of America		5,437	6,114	5,995	6,025	6,039	5,976	5,468
Taiwan		2,633	2,620	2,807	3,585	4,195	5,538	8,285
Viet Nam		1,072	949	743	690	1,093	2,987	8,730
Nepal		8,372	8,951	8,373	8,385	7,763	7,145	6,629
Singapore		1,939	2,564	3,424	4,648	4,623	4,780	4,857
Bangladesh		2,159	2,167	2,240	2,630	3,289	4,439	5,413
Sri Lanka		1,378	1,652	2,301	2,817	2,867	3,189	3,075
Germany		1,352	1,293	1,053	962	1,335	2,292	3,429
Colombia		1,083	1,054	1,171	1,441	1,864	2,624	3,614
Pakistan		1,829	2,249	2,506	2,868	3,058	3,302	3,377
United Kingdom		1,541	1,997	2,521	3,073	3,375	3,603	3,557
Canada		49	84	240	466	996	1,595	3,248
Saudi Arabia		1,074	1,231	1,284	1,388	1,648	2,055	2,228
France								

Filtering the display of data

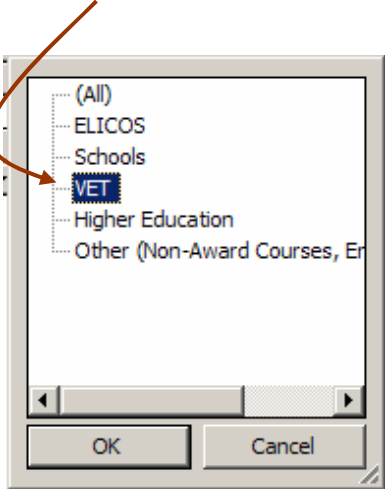
You can filter or 'restrict' the data you wish to display in your table. This is best achieved by placing the variable you wish to use into the page area, then selecting the category from that variable you wish to restrict the data to. For example, if you wish to generate a table of enrolments in Queensland, you need to ensure the variable "State" is in the page field, then click on the drop arrow and select QLD, then click OK.



This leads to a more restricted table showing YTD enrolments by Year by Nationality for Queensland.

Sum of DATA YTD Enrolments	Year	2002	2003	2004	2005	2006	2007	2008
Nationality	2002	2,139	2,822	3,779	5,275	6,134	6,485	7,08
China		828	858	1,015	1,454	1,623	2,079	4,77
India		2,331	2,542	3,374	3,708	4,205	4,721	4,81
Korea, Republic of (South)		1,172	1,481	1,516	1,666	1,534	1,542	1,59
Malaysia		1,751	2,286	2,319	2,396	2,282	2,158	1,88
Hong Kong		800	1,044	1,025	1,065	1,077	995	1,01
Thailand		2,481	2,983	3,238	3,177	3,011	2,784	2,38
Japan		818	877	836	781	640	557	49
Indonesia		510	459	541	813	1,214	1,451	1,74
Brazil		1,302	1,687	2,129	2,211	2,241	1,993	1,50
United States of America		1,931	2,254	2,281	2,364	2,542	2,531	2,34
Taiwan		153	185	255	345	391	399	60
Viet Nam		31	26	34	36	55	126	43
Nepal		1,585	1,723	1,552	1,434	1,193	998	94
Singapore		111	156	152	178	142	141	12
Bangladesh		102	104	111	144	188	300	35
Sri Lanka		288	356	504	661	719	892	89
Germany		328	291	236	204	288	508	1,01
Colombia								

If required, the data could then be further restricted to show only Queensland enrolments in the VET sector, for example. To do this, click the down arrow next to the “Sector” variable and select VET. This restricts the data displayed in the table to the Queensland VET sector.



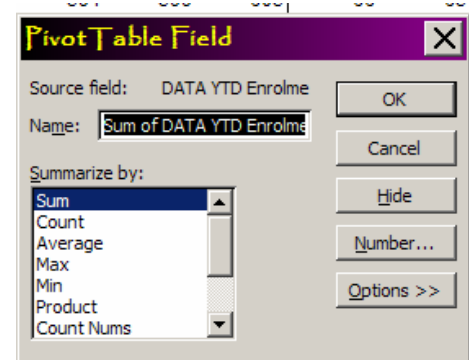
Month	Feb							
Sector	VET							
State	QLD							
Sum of DATA YTD Enrolments	Year	2002	2003	2004	2005	2006	2007	2008
Nationality	2002	2003	2004	2005	2006	2007	2008	
China	279	367	439	718	832	1,064	1,205	
India	53	32	31	56	93	308	2,147	
Korea, Republic of (South)	454	331	355	474	571	718	851	
Malaysia	63	70	74	98	108	111	114	
Hong Kong	456	548	476	472	442	411	388	
Thailand	96	125	132	166	180	181	204	
Japan	574	663	782	799	757	693	606	
Indonesia	118	118	99	83	64	67	68	
Brazil	94	78	98	174	262	366	504	
United States of America	118	146	109	111	121	121	102	
Taiwan	351	378	373	350	385	389	387	
Viet Nam	11	8	11	28	34	38	80	
Nepal	5	3	3	1	7	69	354	
Singapore	24	23	35	34	40	39	43	
Bangladesh	10	4	12	11	11	12	21	
Sri Lanka	9	6	10	26	51	89	125	
Germany	24	25	39	37	44	60	62	
Colombia	90	63	44	36	41	109	306	
Pakistan	4	2	11	9	24	41	53	
United Kingdom	58	80	87	120	172	263	353	
Canada	51	61	83	62	89	64	53	
Saudi Arabia	0	0	2	6	12	11	27	
France	28	31	26	32	30	43	63	
Czech Republic	22	23	26	28	17	21	27	
Mauritius	2	1	3	8	7	14	34	

This table appears.

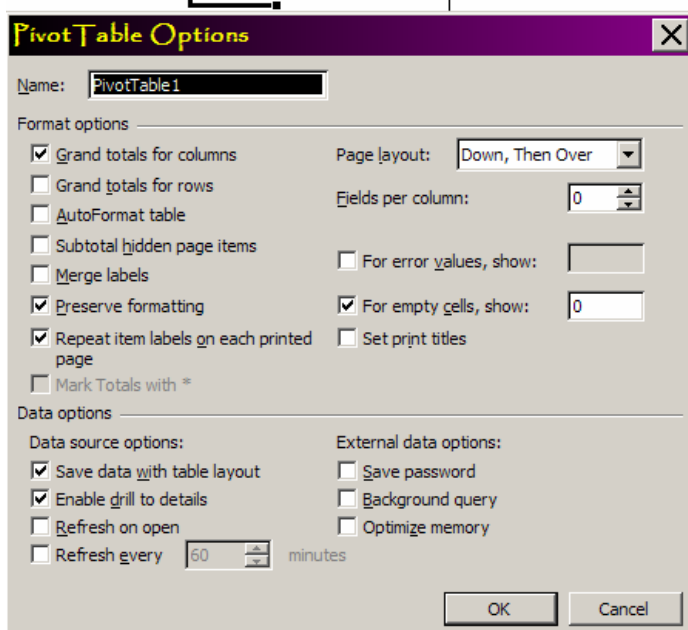
The Pivot Table menu

Right-clicking on any cell in the data area calls up a number of options including:

- Field Settings

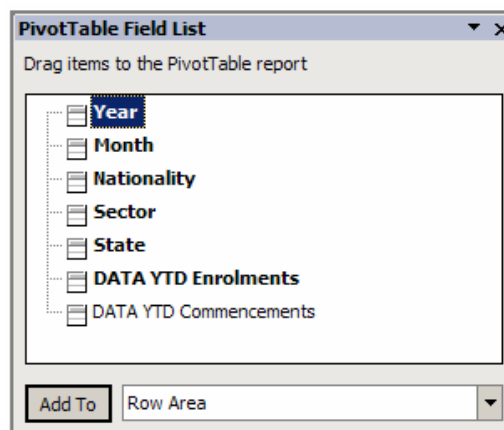


- Table Options



- Show Field List

The 'show field list' brings up the list of all variables and data items available in the pivot table. Note that items already used (or included) in the table appear bolded.

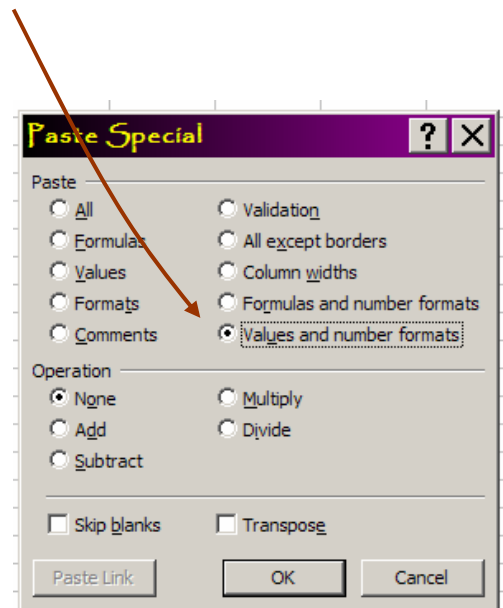


Copying the Pivot Table output to an Excel spreadsheet

The key steps are:

1. Using the mouse, select by clicking and painting over the data cells and headings you want (shaded grey in the graphic below), then copy your selection into the Clipboard by either using Ctrl-C (on your keyboard) or selecting Edit-Copy on the Excel menu bar.
2. Open a new workbook (by using the 'New' workbook icon on the Excel menu bar).
3. Click in any cell in the new workbook, and then from the Excel menu bar, use the command 'Edit-Paste Special', then select 'Values and number formats' in the radio button and click OK. Using the normal paste command 'Edit-Paste' or Ctrl-V is to be avoided.

Sum of DATA YTD Enrolments	Year	2002	2003	2004	2005	2006	2007	2008
Nationality								
India		53	32	31	56	93	308	2,147
China		279	367	439	718	832	1,064	1,205
Korea, Republic of (South)		454	331	355	474	571	718	851
Japan		574	663	782	799	757	693	606
Brazil		94	78	98	174	262	366	504
Hong Kong		456	548	476	472	442	411	388
Taiwan		351	378	373	350	385	389	387
Nepal		5	3	3	1	7	69	354
United Kingdom		58	80	87	120	172	263	353
Colombia		90	63	44	36	41	109	306
Thailand		96	125	132	166	180	181	204
Sri Lanka		9	6	10	26	51	89	125
Philippines		22	17	19	33	43	63	116
Malaysia		63	70	74	98	108	111	114
United States of America		118	146	109	111	121	121	102
Zimbabwe		21	19	9	36	70	81	93
Viet Nam		11	8	11	28	34	38	80
United Arab Emirates		0	5	17	43	64	74	71
Indonesia		118	118	99	83	64	67	68
Sweden		89	59	63	70	90	61	67
France		28	31	26	32	30	43	63
Germany		24	25	39	37	44	60	62
Papua New Guinea		47	56	40	52	44	55	55
Pakistan		4	2	11	9	24	41	53
Canada		51	61	83	62	89	64	53
Singapore		24	23	35	34	40	39	43
Mexico		4	5	6	8	10	27	41
South Africa		19	21	21	25	32	31	40
Mauritius		2	1	3	8	7	14	34



The new spreadsheet with the copied data can be manipulated further to:

- create a chart using Chart Wizard;
- make calculations, eg. proportions, percentage change, etc; or
- formatting before inserting into a document such as a report.

Sum of DATA YTD Enrolments	Year	2002	2003	2004	2005	2006	2007	2008
Nationality								
India		53	32	31	56	93	308	2,147
China		279	367	439	718	832	1,064	1,205
Korea, Republic of (South)		454	331	355	474	571	718	851
Japan		574	663	782	799	757	693	606
Brazil		94	78	98	174	262	366	504
Hong Kong		456	548	476	472	442	411	388
Taiwan		351	378	373	350	385	389	387
Nepal		5	3	3	1	7	69	354
United Kingdom		58	80	87	120	172	263	353
Colombia		90	63	44	36	41	109	306

Other useful data

Research and Market Data Snapshots

The Research Snapshot series was developed to provide stakeholders with one-page summary updates on current activities and developments in international education data and research. The series provide examples of the ways in which Detailed Pivot Table data can be manipulated to meet an individual users needs.

Similarly, Market Data Snapshots present a one-page summary of market-specific data together with local insights from AEI's International Network to help explain trends in enrolment data from overseas markets.

Research papers

A number of research papers have been developed by AEI to provide international education industry stakeholders with the findings of more detailed analysis of AEI's international student database.

Data categories available from AEI pivot tables

The following are descriptions of the data categories included in the standard AEI monthly pivot tables.

YTD Enrolments

The running total of international student enrolments for the calendar year, eg. YTD Enrolments to September 2006 is the total of the enrolments for each month from January 2006 to September 2006.

YTD Commencements

The running total of international student commencements for the calendar year, eg. YTD Commencements to March 2005 is the total of the commencements for each month from January 2005 to March 2005.

As at 1st Month

The number of international student *enrolments* as at the first day of the month.

Enrolments for Month

The total number of international student enrolments in the month. This is the sum of enrolments at the 1st of month plus commencements for the month.

Commencements for Month

The number of international student commencements during the month.

Note: An **enrolment** is a count of any student enrolments in a discrete course of study and includes ongoing students. A **commencement** is a count of new student enrolments in a discrete course of study (and hence a component of the total count of all enrolments) at a particular institution.

Details of data variables available from AEI pivot tables

The following are the data variables available in AEI monthly pivot tables as at May 2008.

Region

North-East Asia
South-East Asia
Southern and Central Asia
Americas
North-West Europe
Sub-Saharan Africa
Southern and Eastern Europe
North Africa and the Middle East
Oceania and Antarctica
Unknown

Nationality

Afghanistan	Canada	France	Korea, Democratic People's
Albania	Cape Verde	French Guiana	Republic of (North)
Algeria	Chile	French Polynesia	Korea, Republic of (South)
Andorra	China	French Southern	Kuwait
Angola	Cocos (Keeling)	Territories	Kyrgyzstan
Anguilla	Islands	Gabon	Lao People's Democratic
Argentina	Colombia	Gambia	Republic
Armenia	Comoros	Georgia	Latvia
Austria	Congo	Germany	Lebanon
Azerbaijan	Congo, Democratic	Ghana	Lesotho
Bahamas	Republic of the	Greece	Liberia
Bahrain	Costa Rica	Grenada	Libyan Arab Jamahiriya
Bangladesh	Côte d'Ivoire	Guatemala	Liechtenstein
Barbados	Croatia	Guinea	Lithuania
Belarus	Cuba	Guyana	Luxembourg
Belgium	Cyprus	Haiti	Macau
Belize	Czech Republic	Honduras	Macedonia, The former
Benin	Denmark	Hong Kong	Yugoslav Republic of
Bermuda	Djibouti	Hungary	Madagascar
Bhutan	Dominica	Iceland	Malawi
Bolivia	Dominican Republic	India	Malaysia
Bosnia and	East Timor	Indonesia	Maldives
Herzegovina	Ecuador	Iran, Islamic	Mali
Botswana	Egypt	Republic of	Malta
Bouvet Island	El Salvador	Iraq	Marshall Islands
Brazil	Equatorial Guinea	Ireland	Mauritania
British Indian	Eritrea	Israel	Mauritius
Ocean Territory	Estonia	Italy	Mexico
Brunei	Ethiopia	Jamaica	Micronesia, Federated States of
Darussalam	Falkland Islands	Japan	Moldova, Republic of
Bulgaria	(Malvinas)	Jordan	Monaco
Burundi	Faroe Islands	Kazakstan	Mongolia
Cambodia	Fiji	Kenya	Morocco
Cameroon	Finland	Kiribati	Mozambique

Myanmar	Philippines	Slovakia	Tunisia
Namibia	Poland	Slovenia	Turkey
Nauru	Portugal	Solomon Islands	Turkmenistan
Nepal	Puerto Rico	Somalia	Turks and Caicos Islands
Netherlands	Qatar	South Africa	Tuvalu
Netherlands	Réunion	Spain	Uganda
Antilles	Romania	Sri Lanka	Ukraine
New Caledonia	Russian Federation	Sudan	United Arab Emirates
Nicaragua	Rwanda	Suriname	United Kingdom
Niger	Saint Kitts and Nevis	Swaziland	United Kingdom (Other)
Nigeria	Saint Lucia	Sweden	United States (Territories)
Northern Mariana	Saint Vincent and the	Switzerland	United States of America
Islands	Grenadines	Syrian Arab	Uruguay
Norway	Samoa	Republic	Uzbekistan
Oman	Samoa, American	Taiwan	Vanuatu
Other	Sao Tomé and	Tajikistan	Venezuela
Pakistan	Principe	Tanzania, United	Viet Nam
Palau	Saudi Arabia	Republic of	Wallis and Futuna
Palestine	Senegal	Thailand	Yemen
Panama	Serbia and	Timor-Leste	Yugoslavia
Papua New	Montenegro	Togo	Zambia
Guinea	Seychelles	Tonga	Zimbabwe
Paraguay	Sierra Leone	Trinidad and	
Peru	Singapore	Tobago	

Sector

Higher Education

VET

ELICOS

Schools

Other (Non-Award Courses, Enabling Courses)

Level of Study

Advanced Certificate

Advanced Diploma

Associate Degree

Associate Diploma

Bachelor Degree

Certificate

Certificate I

Certificate II

Certificate III

Certificate IV

Diploma

Doctor of Philosophy

Enabling Course

Graduate Certificate

Graduate Diploma

Junior Secondary Studies

Kindergarten Studies

Masters Coursework

Masters Preliminary

Masters Research

Non-Award

PHD & Higher Doctorate

Qualifying Program

Primary School Studies

Senior Secondary Studies

Vocational Graduate Certificate

Vocational Graduate Diploma

Broad, Narrow and Detailed Field of Education*

01 NATURAL AND PHYSICAL SCIENCES

0101 MATHEMATICAL SCIENCES

- 010101 Mathematics
- 010103 Statistics
- 010199 Mathematical Sciences, n.e.c.

0103 PHYSICS AND ASTRONOMY

- 010301 Physics
- 010303 Astronomy

0105 CHEMICAL SCIENCES

- 010501 Organic Chemistry
- 010503 Inorganic Chemistry
- 010599 Chemical Sciences, n.e.c.

0107 EARTH SCIENCES

- 010701 Atmospheric Sciences
- 010703 Geology
- 010705 Geophysics
- 010707 Geochemistry
- 010709 Soil Science
- 010711 Hydrology
- 010713 Oceanography
- 010799 Earth Sciences, n.e.c.

0109 BIOLOGICAL SCIENCES

- 010901 Biochemistry and Cell Biology
- 010903 Botany
- 010905 Ecology and Evolution
- 010907 Marine Science
- 010909 Genetics
- 010911 Microbiology
- 010913 Human Biology
- 010915 Zoology
- 010999 Biological Sciences, n.e.c.

0199 OTHER NATURAL AND PHYSICAL SCIENCES

- 019901 Medical Science
- 019903 Forensic Science
- 019905 Food Science and Biotechnology
- 019907 Pharmacology
- 019909 Laboratory Technology
- 019999 Natural and Physical Sciences, n.e.c.

02 INFORMATION TECHNOLOGY

0201 COMPUTER SCIENCE

- 020101 Formal Language Theory
- 020103 Programming
- 020105 Computational Theory
- 020107 Compiler Construction
- 020109 Algorithms
- 020111 Data Structures
- 020113 Networks and Communications
- 020115 Computer Graphics
- 020117 Operating Systems
- 020119 Artificial Intelligence
- 020199 Computer Science, n.e.c.

0203 INFORMATION SYSTEMS

- 020301 Conceptual Modelling
- 020303 Database Management
- 020305 Systems Analysis and Design
- 020307 Decision Support Systems
- 020399 Information Systems, n.e.c.

0299 OTHER INFORMATION TECHNOLOGY

- 029901 Security Science
- 029999 Information Technology, n.e.c.

* Based on the Australian Standard Classification of Education (ASCED). All historical data back to January 2002 has been recoded to the new classification available from the detailed pivot table. For full details, refer to 'Australian Standard Classification of Education (ASCED), 2001' (ABS Catalogue No. 1272.0) available as a free download from the ABS website at www.abs.gov.au.

03 ENGINEERING AND RELATED TECHNOLOGIES

0301 MANUFACTURING ENGINEERING AND TECHNOLOGY

- 030101 Manufacturing Engineering
- 030103 Printing
- 030105 Textile Making
- 030107 Garment Making
- 030109 Footwear Making
- 030111 Wood Machining and Turning
- 030113 Cabinet Making
- 030115 Furniture Upholstery and Renovation
- 030117 Furniture Polishing
- 030199 Manufacturing Engineering and Technology, n.e.c.

0303 PROCESS AND RESOURCES ENGINEERING

- 030301 Chemical Engineering
- 030303 Mining Engineering
- 030305 Materials Engineering
- 030307 Food Processing Technology
- 030399 Process and Resources Engineering, n.e.c.

0305 AUTOMOTIVE ENGINEERING AND TECHNOLOGY

- 030501 Automotive Engineering
- 030503 Vehicle Mechanics
- 030505 Automotive Electrics and Electronics
- 030507 Automotive Vehicle Refinishing
- 030509 Automotive Body Construction
- 030511 Panel Beating
- 030513 Upholstery and Vehicle Trimming
- 030515 Automotive Vehicle Operations
- 030599 Automotive Engineering and Technology, n.e.c.

0307 MECHANICAL AND INDUSTRIAL ENGINEERING AND TECHNOLOGY

- 030701 Mechanical Engineering
- 030703 Industrial Engineering
- 030705 Toolmaking
- 030707 Metal Fitting, Turning and Machining
- 030709 Sheetmetal Working
- 030711 Boilermaking and Welding
- 030713 Metal Casting and Patternmaking
- 030715 Precision Metalworking
- 030717 Plant and Machine Operations
- 030799 Mechanical and Industrial Engineering and Technology, n.e.c.

0309 CIVIL ENGINEERING

- 030901 Construction Engineering
- 030903 Structural Engineering
- 030905 Building Services Engineering
- 030907 Water and Sanitary Engineering
- 030909 Transport Engineering
- 030911 Geotechnical Engineering
- 030913 Ocean Engineering
- 030999 Civil Engineering, n.e.c.

0311 GEOMATIC ENGINEERING

- 031101 Surveying
- 031103 Mapping Science
- 031199 Geomatic Engineering, n.e.c.

0313 ELECTRICAL AND ELECTRONIC ENGINEERING AND TECHNOLOGY

- 031301 Electrical Engineering
- 031303 Electronic Engineering
- 031305 Computer Engineering
- 031307 Communications Technologies
- 031309 Communications Equipment Installation and Maintenance
- 031311 Powerline Installation and Maintenance
- 031313 Electrical Fitting, Electrical Mechanics
- 031315 Refrigeration and Air Conditioning Mechanics
- 031317 Electronic Equipment Servicing
- 031399 Electrical and Electronic Engineering and Technology, n.e.c.

0315 AEROSPACE ENGINEERING AND TECHNOLOGY

- 031501 Aerospace Engineering
- 031503 Aircraft Maintenance Engineering
- 031505 Aircraft Operation
- 031507 Air Traffic Control
- 031599 Aerospace Engineering and Technology, n.e.c.

0317 MARITIME ENGINEERING AND TECHNOLOGY

- 031701 Maritime Engineering
- 031703 Marine Construction
- 031705 Marine Craft Operation
- 031799 Maritime Engineering and Technology, n.e.c.

0399 OTHER ENGINEERING AND RELATED TECHNOLOGIES

- 039901 Environmental Engineering
- 039903 Biomedical Engineering
- 039905 Fire Technology
- 039907 Rail Operations
- 039909 Cleaning
- 039999 Engineering and Related Technologies, n.e.c.

04 ARCHITECTURE AND BUILDING

0401 ARCHITECTURE AND URBAN ENVIRONMENT

- 040101 Architecture
- 040103 Urban Design and Regional Planning
- 040105 Landscape Architecture
- 040107 Interior and Environmental Design
- 040199 Architecture and Urban Environment, n.e.c.

0403 BUILDING

- 040301 Building Science and Technology
- 040303 Building Construction Management
- 040305 Building Surveying
- 040307 Building Construction Economics
- 040309 Bricklaying and Stonemasonry
- 040311 Carpentry and Joinery
- 040313 Ceiling, Wall and Floor Fixing
- 040315 Roof Fixing
- 040317 Plastering
- 040319 Furnishing Installation
- 040321 Floor Coverings
- 040323 Glazing
- 040325 Painting, Decorating and Sign Writing
- 040327 Plumbing
- 040329 Scaffolding and Rigging
- 040399 Building, n.e.c.

05 AGRICULTURE, ENVIRONMENTAL AND RELATED STUDIES

0501 AGRICULTURE

- 050101 Agricultural Science
- 050103 Wool Science
- 050105 Animal Husbandry
- 050199 Agriculture, n.e.c.

0503 HORTICULTURE AND VITICULTURE

- 050301 Horticulture
- 050303 Viticulture

0505 FORESTRY STUDIES

- 050501 Forestry Studies

0507 FISHERIES STUDIES

- 050701 Aquaculture
- 050799 Fisheries Studies, n.e.c.

0509 ENVIRONMENTAL STUDIES

- 050901 Land, Parks and Wildlife Management
- 050999 Environmental Studies, n.e.c.

0599 OTHER AGRICULTURE, ENVIRONMENTAL AND RELATED STUDIES

- 059901 Pest and Weed Control
- 059999 Agriculture, Environmental and Related Studies, n.e.c.

06 HEALTH

0601 MEDICAL STUDIES

- 060101 General Medicine
- 060103 Surgery
- 060105 Psychiatry
- 060107 Obstetrics and Gynaecology
- 060109 Paediatrics
- 060111 Anaesthesiology
- 060113 Pathology
- 060115 Radiology
- 060117 Internal Medicine
- 060119 General Practice
- 060199 Medical Studies, n.e.c.

0603 NURSING

- 060301 General Nursing
- 060303 Midwifery
- 060305 Mental Health Nursing
- 060307 Community Nursing
- 060309 Critical Care Nursing
- 060311 Aged Care Nursing
- 060313 Palliative Care Nursing
- 060315 Mothercraft Nursing and Family and Child Health Nursing
- 060399 Nursing, n.e.c.

0605 PHARMACY

- 060501 Pharmacy

0607 DENTAL STUDIES

- 060701 Dentistry
- 060703 Dental Assisting
- 060705 Dental Technology
- 060799 Dental Studies, n.e.c.

0609 OPTICAL SCIENCE

- 060901 Optometry
- 060903 Optical Technology
- 060999 Optical Science, n.e.c.

0611 VETERINARY STUDIES

- 061101 Veterinary Science
- 061103 Veterinary Assisting
- 061199 Veterinary Studies, n.e.c.

0613 PUBLIC HEALTH

- 061301 Occupational Health and Safety
- 061303 Environmental Health
- 061305 Indigenous Health
- 061307 Health Promotion
- 061309 Community Health
- 061311 Epidemiology
- 061399 Public Health, n.e.c.

0615 RADIOGRAPHY

- 061501 Radiography

0617 REHABILITATION THERAPIES

- 061701 Physiotherapy
- 061703 Occupational Therapy
- 061705 Chiropractic and Osteopathy
- 061707 Speech Pathology
- 061709 Audiology
- 061711 Massage Therapy
- 061713 Podiatry
- 061799 Rehabilitation Therapies, n.e.c.

0619 COMPLEMENTARY THERAPIES

- 061901 Naturopathy
- 061903 Acupuncture
- 061905 Traditional Chinese Medicine
- 061999 Complementary Therapies, n.e.c.

0699 OTHER HEALTH

- 069901 Nutrition and Dietetics
- 069903 Human Movement
- 069905 Paramedical Studies
- 069907 First Aid
- 069999 Health, n.e.c.

07 EDUCATION

0701 TEACHER EDUCATION

- 070101 Teacher Education: Early Childhood
- 070103 Teacher Education: Primary
- 070105 Teacher Education: Secondary
- 070107 Teacher-Librarianship
- 070109 Teacher Education: Vocational Education and Training
- 070111 Teacher Education: Higher Education
- 070113 Teacher Education: Special Education
- 070115 English as a Second Language Teaching
- 070117 Nursing Education Teacher Training
- 070199 Teacher Education, n.e.c.

0703 CURRICULUM AND EDUCATION STUDIES

- 070301 Curriculum Studies
- 070303 Education Studies

0799 OTHER EDUCATION

- 079999 Education, n.e.c.

08 MANAGEMENT AND COMMERCE

0801 ACCOUNTING

- 080101 Accounting

0803 BUSINESS AND MANAGEMENT

- 080301 Business Management
- 080303 Human Resource Management
- 080305 Personal Management Training
- 080307 Organisation Management
- 080309 Industrial Relations
- 080311 International Business
- 080313 Public and Health Care Administration
- 080315 Project Management
- 080317 Quality Management
- 080319 Hospitality Management
- 080321 Farm Management and Agribusiness
- 080323 Tourism Management
- 080399 Business and Management, n.e.c.

0805 SALES AND MARKETING

- 080501 Sales
- 080503 Real Estate
- 080505 Marketing
- 080507 Advertising
- 080509 Public Relations
- 080599 Sales and Marketing, n.e.c.

0807 TOURISM

- 080701 Tourism

0809 OFFICE STUDIES

- 080901 Secretarial and Clerical Studies
- 080903 Keyboard Skills
- 080905 Practical Computing Skills
- 080999 Office Studies, n.e.c.

0811 BANKING, FINANCE AND RELATED FIELDS

- 081101 Banking and Finance
- 081103 Insurance and Actuarial Studies
- 081105 Investment and Securities
- 081199 Banking, Finance and Related Fields, n.e.c.

0899 OTHER MANAGEMENT AND COMMERCE

- 089901 Purchasing, Warehousing and Distribution
- 089903 Valuation
- 089999 Management and Commerce, n.e.c.

09 SOCIETY AND CULTURE

0901 POLITICAL SCIENCE AND POLICY STUDIES

- 090101 Political Science
- 090103 Policy Studies

0903 STUDIES IN HUMAN SOCIETY

- 090301 Sociology
- 090303 Anthropology
- 090305 History
- 090307 Archaeology
- 090309 Human Geography
- 090311 Indigenous Studies
- 090313 Gender Specific Studies
- 090399 Studies in Human Society, n.e.c.

0905 HUMAN WELFARE STUDIES AND SERVICES

- 090501 Social Work
- 090503 Children's Services
- 090505 Youth Work
- 090507 Care for the Aged
- 090509 Care for the Disabled
- 090511 Residential Client Care
- 090513 Counselling
- 090515 Welfare Studies
- 090599 Human Welfare Studies and Services, n.e.c.

0907 BEHAVIOURAL SCIENCE

- 090701 Psychology
- 090799 Behavioural Science, n.e.c.

0909 LAW

- 090901 Business and Commercial Law
- 090903 Constitutional Law
- 090905 Criminal Law
- 090907 Family Law
- 090909 International Law
- 090911 Taxation Law
- 090913 Legal Practice
- 090999 Law, n.e.c.

0911 JUSTICE AND LAW ENFORCEMENT

- 091101 Justice Administration
- 091103 Legal Studies
- 091105 Police Studies
- 091199 Justice and Law Enforcement, n.e.c.

0913 LIBRARIANSHIP, INFORMATION MANAGEMENT AND CURATORIAL STUDIES

- 091301 Librarianship and Information Management
- 091303 Curatorial Studies

0915 LANGUAGE AND LITERATURE

- 091501 English Language
- 091503 Northern European Languages
- 091505 Southern European Languages
- 091507 Eastern European Languages
- 091509 Southwest Asian and North African Languages
- 091511 Southern Asian Languages
- 091513 Southeast Asian Languages
- 091515 Eastern Asian Languages
- 091517 Australian Indigenous Languages
- 091519 Translating and Interpreting
- 091521 Linguistics
- 091523 Literature
- 091599 Language and Literature, n.e.c.

0917 PHILOSOPHY AND RELIGIOUS STUDIES

- 091701 Philosophy
- 091703 Religious Studies

0919 ECONOMICS AND ECONOMETRICS

- 091901 Economics
- 091903 Econometrics

0921 SPORT AND RECREATION

- 092101 Sport and Recreation Activities
- 092103 Sports Coaching, Officiating and Instruction
- 092199 Sport and Recreation, n.e.c.

0999 OTHER SOCIETY AND CULTURE

- 099901 Family and Consumer Studies
- 099903 Criminology
- 099905 Security Services
- 099999 Society and Culture, n.e.c.

10 CREATIVE ARTS

1001 PERFORMING ARTS

- 100101 Music
- 100103 Drama and Theatre Studies
- 100105 Dance
- 100199 Performing Arts, n.e.c.

1003 VISUAL ARTS AND CRAFTS

- 100301 Fine Arts
- 100303 Photography
- 100305 Crafts
- 100307 Jewellery Making
- 100309 Floristry
- 100399 Visual Arts and Crafts, n.e.c.

1005 GRAPHIC AND DESIGN STUDIES

- 100501 Graphic Arts and Design Studies
- 100503 Textile Design
- 100505 Fashion Design
- 100599 Graphic and Design Studies, n.e.c.

1007 COMMUNICATION AND MEDIA STUDIES

- 100701 Audio Visual Studies
- 100703 Journalism
- 100705 Written Communication
- 100707 Verbal Communication
- 100799 Communication and Media Studies, n.e.c.

1099 OTHER CREATIVE ARTS

- 109999 Creative Arts, n.e.c.

11 FOOD, HOSPITALITY AND PERSONAL SERVICES

1101 FOOD AND HOSPITALITY

- 110101 Hospitality
- 110103 Food and Beverage Service
- 110105 Butchery
- 110107 Baking and Pastrymaking
- 110109 Cookery
- 110111 Food Hygiene
- 110199 Food and Hospitality, n.e.c.

1103 PERSONAL SERVICES

- 110301 Beauty Therapy
- 110303 Hairdressing
- 110399 Personal Services, n.e.c.

12 MIXED FIELD PROGRAMMES

1201 GENERAL EDUCATION PROGRAMMES

- 120101 General Primary and Secondary Education Programmes
- 120103 Literacy and Numeracy Programmes
- 120105 Learning Skills Programmes
- 120199 General Education Programmes, n.e.c.

1203 SOCIAL SKILLS PROGRAMMES

- 120301 Social and Interpersonal Skills Programmes
- 120303 Survival Skills Programmes
- 120305 Parental Education Programmes
- 120399 Social Skills Programmes, n.e.c.

1205 EMPLOYMENT SKILLS PROGRAMMES

- 120501 Career Development Programmes
- 120503 Job Search Skills Programmes
- 120505 Work Practices Programmes
- 120599 Employment Skills Programmes, n.e.c.

1299 OTHER MIXED FIELD PROGRAMMES

- 129999 Mixed Field Programmes, n.e.c.

Provider Type

Government
Non Government

State

New South Wales
Victoria
Queensland
Western Australia
South Australia
Tasmania
Northern Territory
Australian Capital Territory